

# PORT NETWORK WHITE PAPER



CEO PORT Network



White Paper v.1.01

## CONTACT

---

Portas GmbH  
Fritz-Vomfelde-Str. 34  
40547 Dusseldorf,  
Germany

Company register: HRB 91395  
District Court Düsseldorf  
VAT ID number: DE340479592  
Tax number: 105/5837/7158

TELEPHONE:  
+49 (0) 211/53883 407  
(Mon.-Fri., 9:00 am - 5:00 pm)

WEBSITE:  
[www.portnetwork.io](http://www.portnetwork.io)

EMAIL:  
[info@portnetwork.io](mailto:info@portnetwork.io)

## PORT TOKEN

### Next level

of  
volunteer & cloud computing  
based  
on a  
blockchain

No one can see the future. But being future-ready? That's one of the strengths of Port Network.



## **What is PORT Network?**

PORT Network is new innovative, high-performance, globally distributed system for cloud and volunteer computing based on a blockchain.

PORT Network is a viable alternative to expensive cloud services, as well as a cost-effective choice when compared to expensive hardware and their maintenance requirements.

Anyone with spare capacity, whether from home or on their own server, can take part. Earn PORT Tokens by providing computing power and/or storage space.

Here, high computing power consumers can purchase services much more cheaply, and quickly implement them in their own environment using standardised technologies.

In today's world many companies, often in scientific fields, require a high level of computing power. Often, these are only needed for a limited period of time.

We paid attention to a large amount of availability during development. The client software is compatible with operating systems such as Windows, Linux and MacOS. Other implementations, such as Android, are currently being researched and developed.

Through standardised procedures, we enable both, clients and consumers, to easily connect to their own system.

In addition, we pay careful attention to factors such as data protection and security during development.

## **Our mission**

- Development of a decentralised system for volunteer computing and cloud computing
- Providing large amounts of resources in a cost-effective and scalable way
- Using available capacity and rewarding clients for this with PORT Tokens
- Avoiding the costs of expensive purchases and maintenance for consumers
- Creating an environmentally-conscious system that shares pre-existing capacity around the world instead of creating new ones unnecessarily

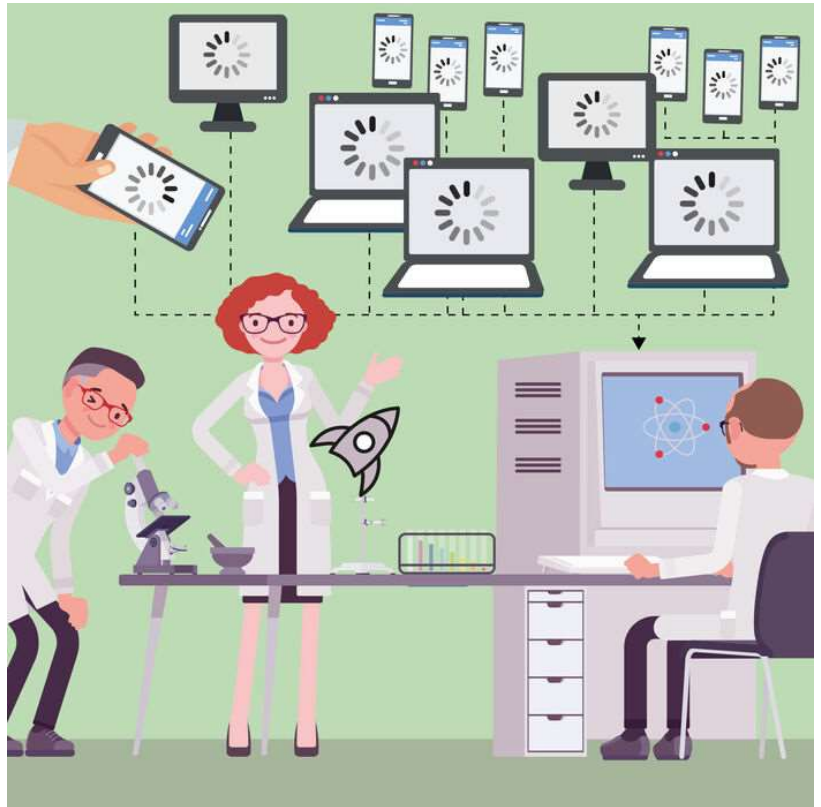


## Our clients

Some examples of where it can be used include:

- Pharmaceutical companies (drug research, cancer research, protein splitting)
- Astrology
- Meteorology
- Biochemistry
- Bioinformatics
- Graphic calculations
- Evolutionary research
- Mathematics
- Cryptography
- Nanotechnology
- Seismology

and many more. The full list of potential uses is much longer, and potential consumers continue to grow.



Example:

If a simple system needs 24 hours for a calculation, the task can be solved in just under 2 minutes by distributed calculation in a network of, for example, 1000 systems. The opportunities and savings this creates are enormous.

The system is scalable, and everyone gets as much power as they need or want in the given situation.

## Implementation

The software consists of two parts. The first part is for clients who want to participate in the system and are willing to make their available capacity accessible to the network for earning PORT tokens. This software client is open source and so isn't subject to a commercial licence. At the start of the project, our first version for different platforms will be made available for download on GitHub. As an open source project, we give everyone an insight into our source code and at the same time the opportunity to further develop and improve it - as part of the community.

The second part is intended for our consumers, that is, our clients. This is based on established technologies, and can be easily integrated into your own system if you're interested. The software will also be available on GitHub.

We will provide documentation for installation, use and all other questions separately at the start of the project.

In addition, we put a calculator online for both consumers and clients. Consumers can choose configurations and specify the number of flops required\* the time required. The consumer is then shown a cost estimate in the form of PORT Tokens. These can then be booked and used as a package. In the personal login area, statistics on usage and services still available can be viewed.

Our clients are also able to calculate their expected income in advance. Entering computing power and any free storage space shows the daily income.

So that clients with a larger farm don't have to pay an unnecessary GAS fee,

the client can also set the interval of the desired payouts in addition to their wallet configuration.

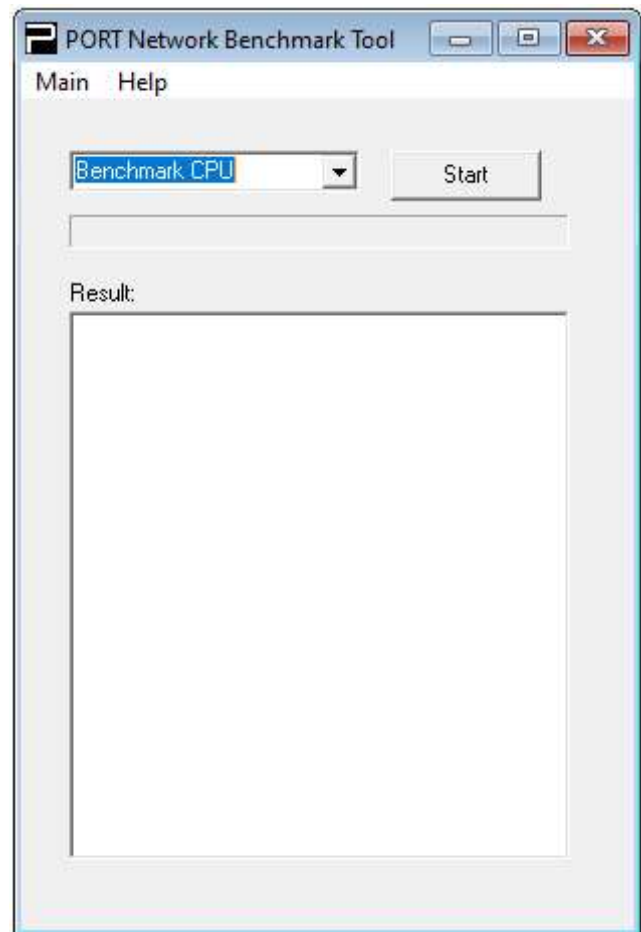
Clients who have a small amount of capacity, or who are only testing the system briefly and don't reach the payout minimum, are recorded by the system every 14 days and paid out automatically.

\* Computing power is defined with the help of what's called floating point operations per second, or "flops" for short.



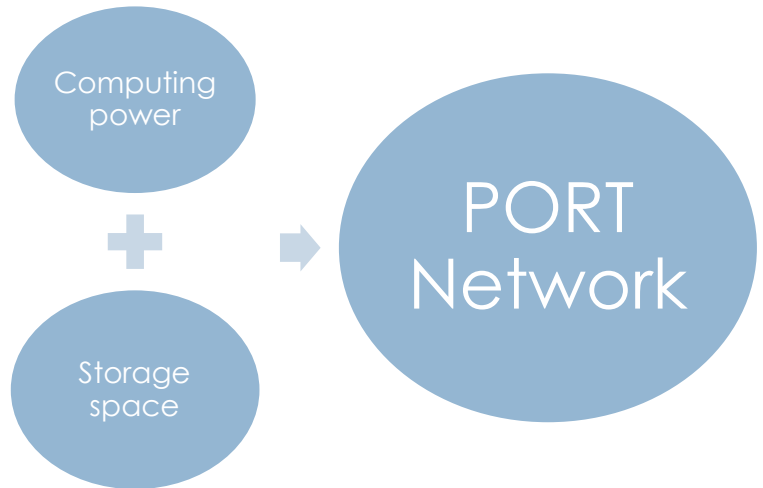
If clients are unable to estimate their capacity in the form of computing power (CPU and GPU) in advance, they can test the performance of a system using a small benchmark tool that we've developed. This is to enable clients to calculate income as accurately as possible in advance, allowing them a solid general overview in the system.

The tool is available for Windows, MacOS and Linux (CLI).



(Screenshot - Benchmark tool for Windows to determine available computing power)

## Implementation in detail



### Computing power

Computing power is defined with the help of what's called floating point operations per second, or "flops" for short. A system's power can be precisely measured and displayed in flops. This enables us to determine how much computing power is free and available, and to precisely calculate how much revenue can be expected as a result.

### Storage space

Along with computing power, we use unused storage space. We use memory blocks of 1024 MB, or 1 GB, of hard disk space as the basis for calculation. The storage space is primarily used for our decentralised cloud services and transferred to the hard disk via end-to-end encryption. We use special encryption procedures to ensure that no access is possible through the client, or from outside. Our software creates small containers on the available storage space which secure the data through sophisticated procedures and guarantee exclusive access by the client.

The creation of a cloud computing system is the main use for unused storage space. Similar to commercial cloud services, we offer our consumers a decentralised, all-inclusive solution that combines volunteer computing with cloud computing. This makes us the first supplier on the market to package both systems in one.

### **The PORT Token**

Our PORT token is based on the Ethereum blockchain and is in ERC-20 format. This makes it one of today's most common

standards, and is supported by almost every wallet. If you want to create the PORT Token in your wallet in advance, you only need our contract address:

0xf2c23a2a25ee6c9597b7b70b050871e34eee3385

The PORT Token can be easily created at MetaMask, Ledger and many other wallets with this contract address.

### Tokenmetrics



- 50 % PreSale
- 25% Marketing & Referral system
- 10% Founders & Team (2-years token block)
- 10% Advisors
- 5% Bounty

### Social media appearances:



**Homepage**  
[www.portnetwork.io](http://www.portnetwork.io)



**Facebook**  
<https://www.facebook.com/portnetwork.io>



**Twitter**  
<https://twitter.com/Portnetwork1>



**Instagram**  
<https://www.instagram.com/port.network>



**LinkedIn**  
<https://www.linkedin.com/company/portnetwork>



**Medium**  
<http://medium.com/@portnetwork.io>



**Contact Information:**

PORT Network

Portas GmbH  
Fritz-Vomfelde-Str. 34  
40547 Düsseldorf,  
Germany

Managing Director: Janusz Siuda

Company register: HRB 91395  
Dusseldorf District Court

VAT ID number: DE340479592  
Tax number: 105/5837/7158

TELEPHONE: +49 (0) 211 - 53883 407  
(Mon.-Fri., 9:00 am-5:00 pm)

Email:  
[info@portnetwork.io](mailto:info@portnetwork.io)

**PORT  
NETWORK**